

## Změna nastavení WAN rozhraní routeru Asus WL-500

### 1. Přihlášení do routeru

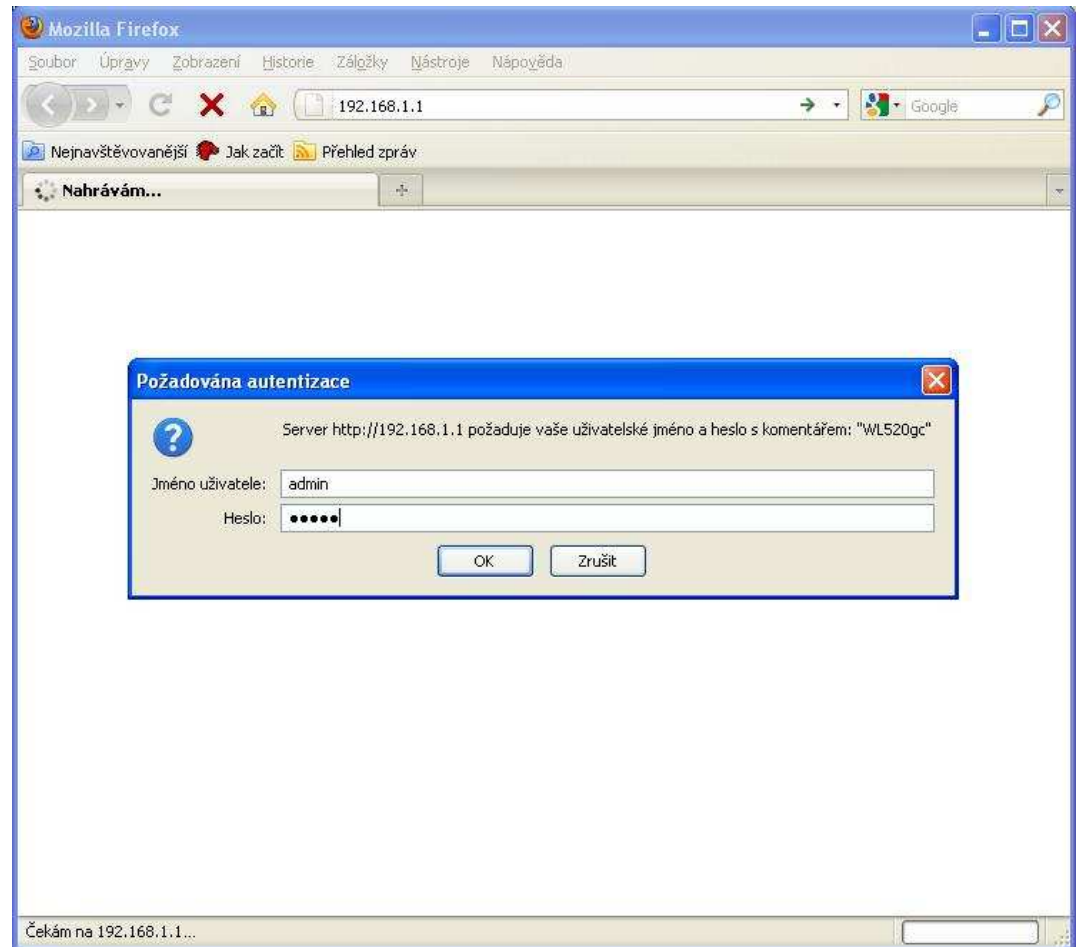
Zadáte IP adresu routeru do libovoněho prohlížeče (Mozilla Firefox, Internet Explorer).

Výchozí IP adresa routeru je 192.168.1.1

(adresa routeru - výchozí brána přiřazená vašemu síťovému adaptéru serverem DHCP)

Uživatelské jméno: admin

Heslo: admin



2. V nabídce „IP Config“ klikněte na „WAN&LAN“ **neměňte** položku „WAN Connection Type“, upravte příslušné položky „WAN IP Setting“ (IP Address, Default Gateway atd...)

**Pozor, IP adresy v tomto okně jsou jen „ukázkové“ a neodpovídají Vašemu připojení**

The screenshot shows the ASUS Wireless Router web interface in Mozilla Firefox. The browser address bar shows `http://192.168.1.1/`. The page title is "ASUS Wireless Router". The left sidebar contains a navigation menu with the following items: Home, Quick Setup, Wireless, IP Config (selected), WAN & LAN, DHCP Server, Route, Miscellaneous, NAT Setting, Internet Firewall, System Setup, Status & Log, and Logout. The main content area is titled "IP Config - WAN & LAN" and contains the following settings:

ASUS Wireless Router supports several connection types to WAN. These types are selected from the drop-down menu beside WAN Connection Type. The setting fields will differ depending on what kind of connection type you select.

WAN Connection Type:	Static IP
Choose WAN Bridge Port:	None

**WAN IP Setting**

Get IP automatically?	<input type="radio"/> Yes <input checked="" type="radio"/> No
IP Address:	172.17.58.3
Subnet Mask:	255.255.0.0
Default Gateway:	172.17.1.1

**WAN DNS Setting**

Get DNS Server automatically?	<input type="radio"/> Yes <input checked="" type="radio"/> No
DNS Server1:	172.27.1.1
DNS Server2:	

PPPoE, PPTP or L2TP Account

3. V dolní části obrazovky klikněte na tlačítko „Finish“

<input type="button" value="Restore"/>		<input type="button" value="Finish"/>	<input type="button" value="Apply"/>
<b>Restore:</b>	Clear the above settings and restore the settings in effect.		
<b>Finish:</b>	Confirm all settings and restart ASUS Wireless Router now.		
<b>Apply:</b>	Confirm above settings and continue.		

a potvrďte volbu „Save&Restart“  
Pak můžete zavřít okno prohlížeče.

ASUS Wireless Router - Mozilla Firefox

http://192.168.1.1/

ASUS Wireless Router

**ASUS Wireless Router**

**Save & Restart**

Save&Restart will save all setting you have changed to ASUS Wireless Router and restart it. Please click **SaveRestart** button to continue.

- Home
- Quick Setup
- Wireless
- IP Config
  - WAN & LAN
  - DHCP Server
  - Route
  - Miscellaneous
- NAT Setting
- Internet Firewall
- System Setup
- Status & Log
- Logout